

# CRL School 2023



Why CRL (<http://crlab.eu>) ?



# The rift of Corinth

The western rift of Corinth is the fastest extending area in Europe and one of the fastest in the world.

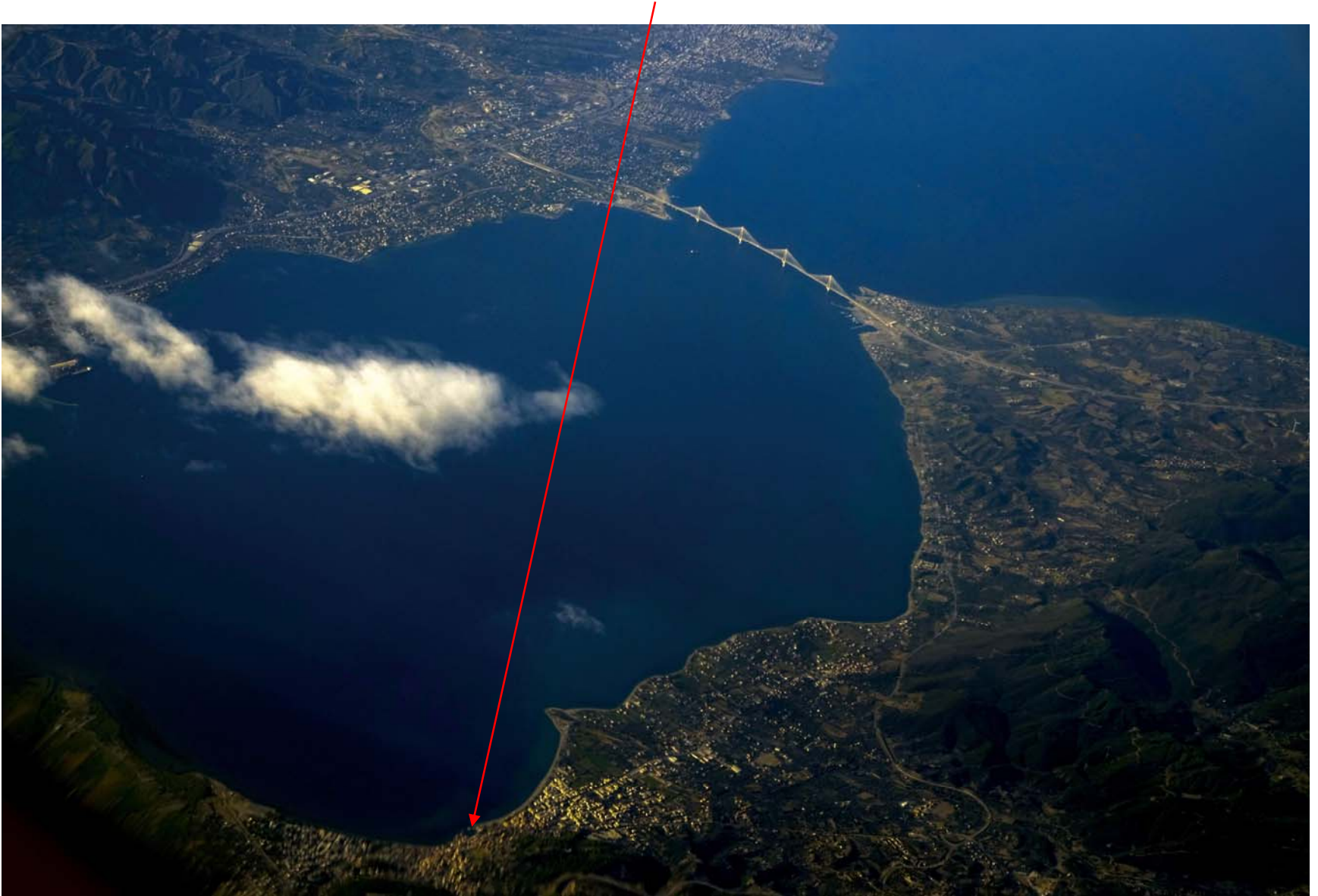




# We are here



**Nafpaktos is there**





**The meeting room of the CRLSchool is there**

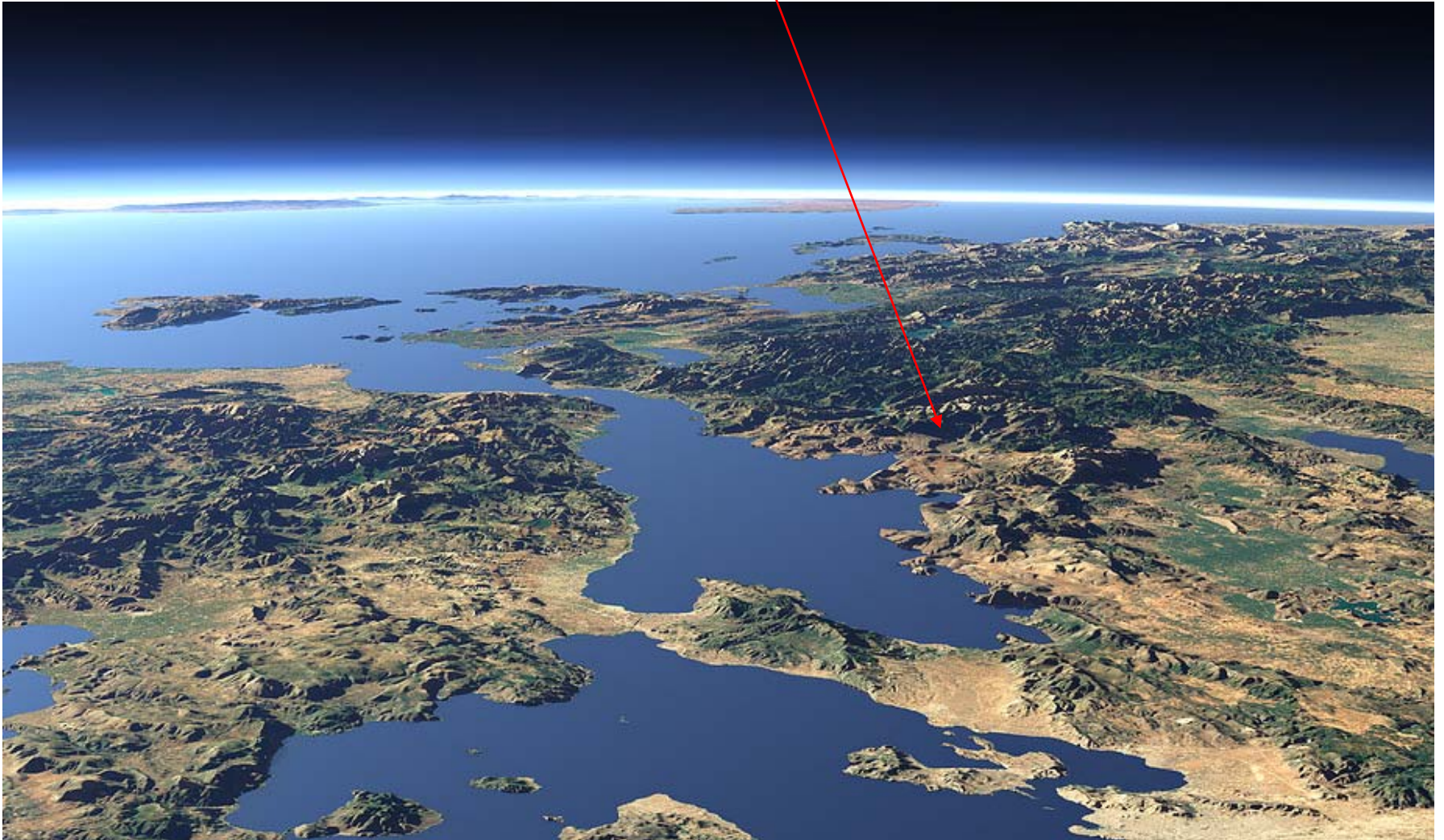




# A great area for history and culture

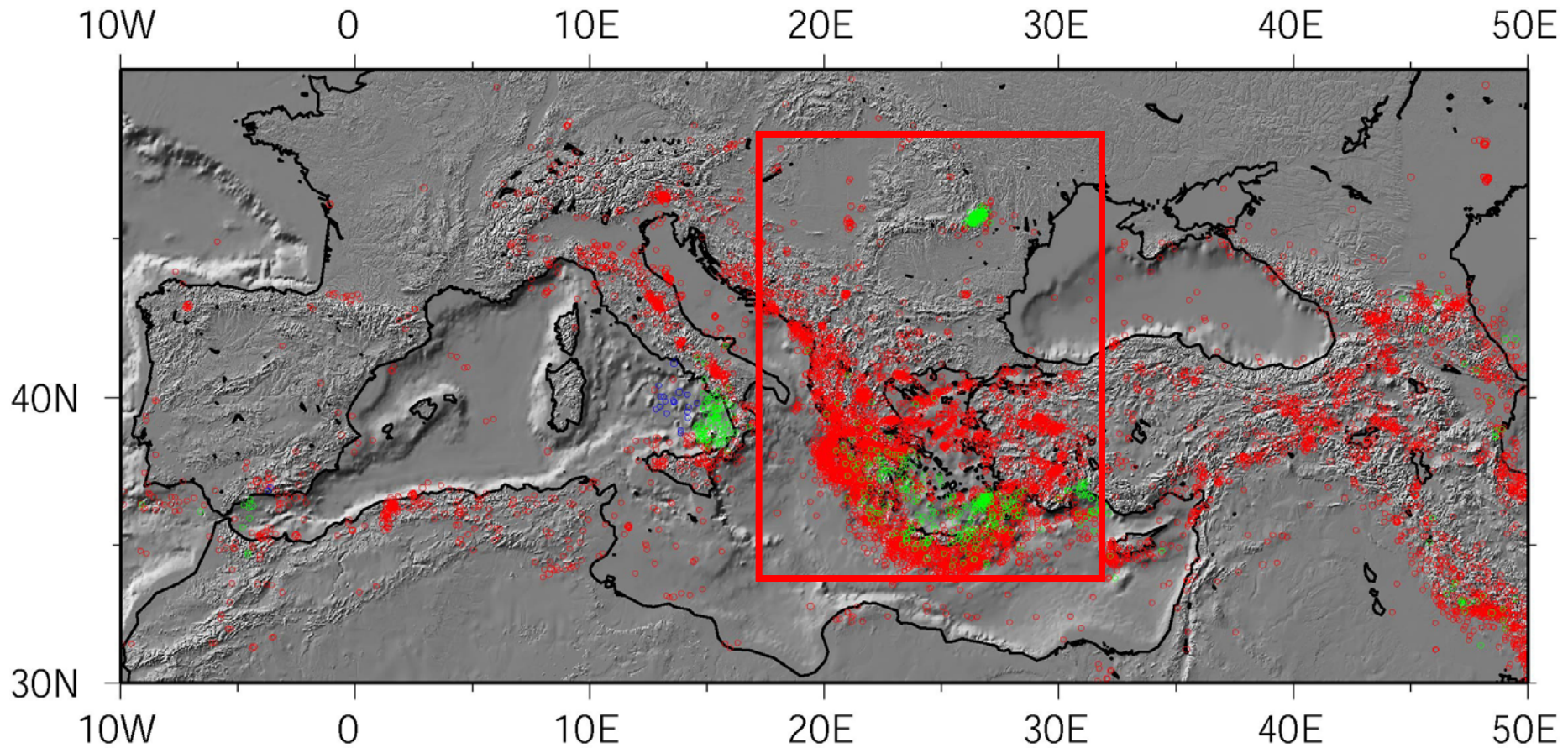


# The centre of the universe is here



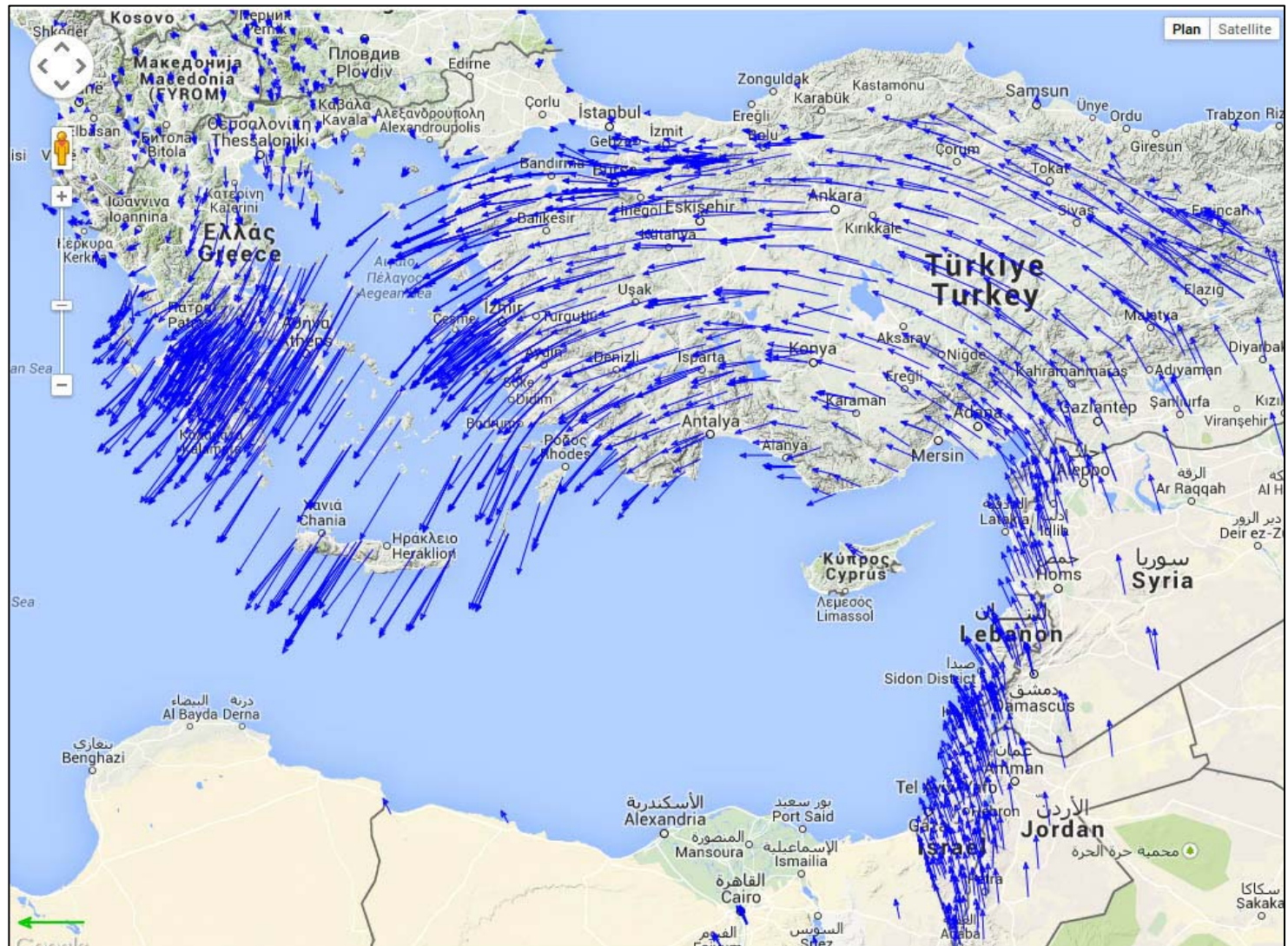


# The most seismic area in Europe

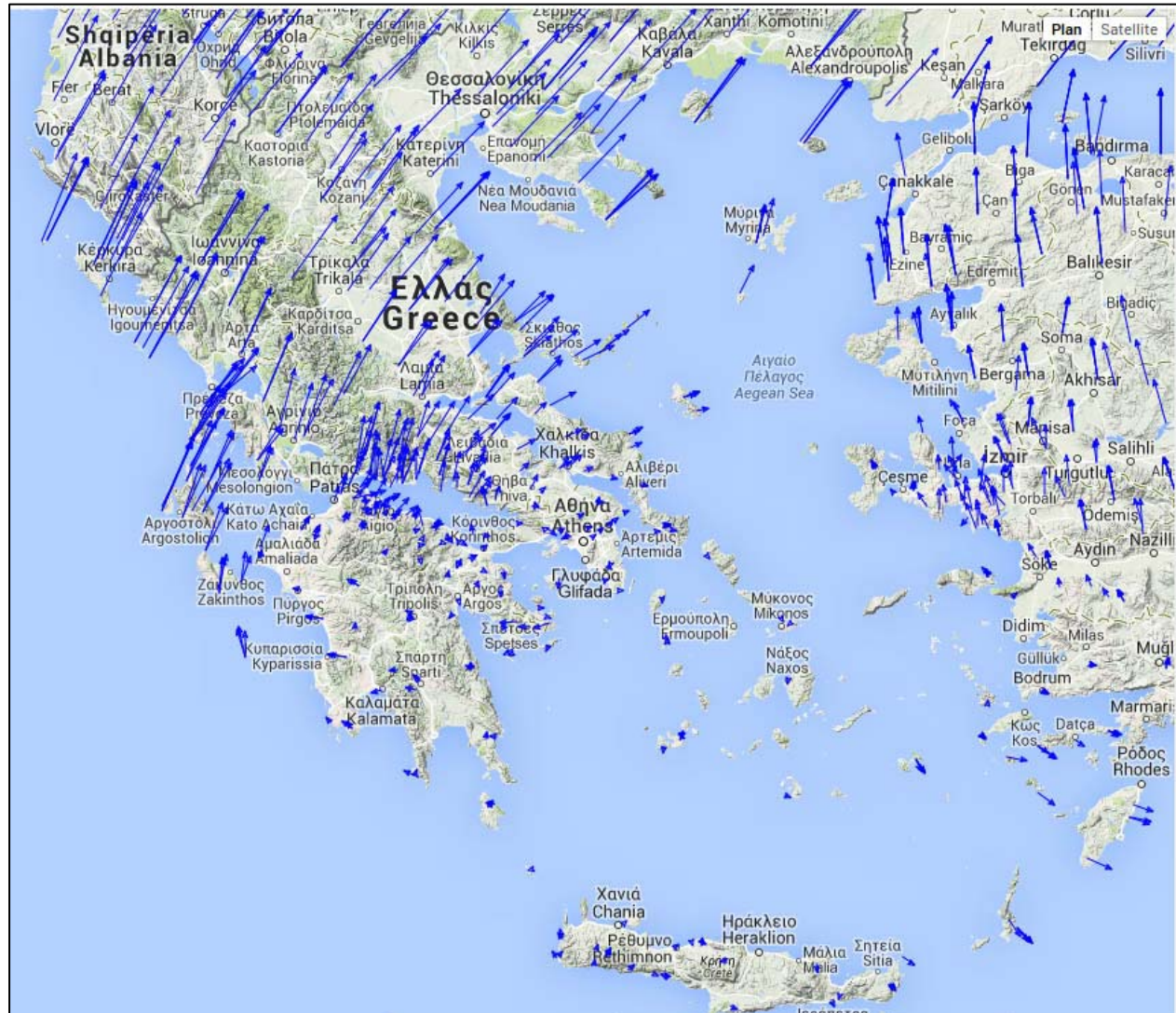




# Western Mediterranean geodynamics

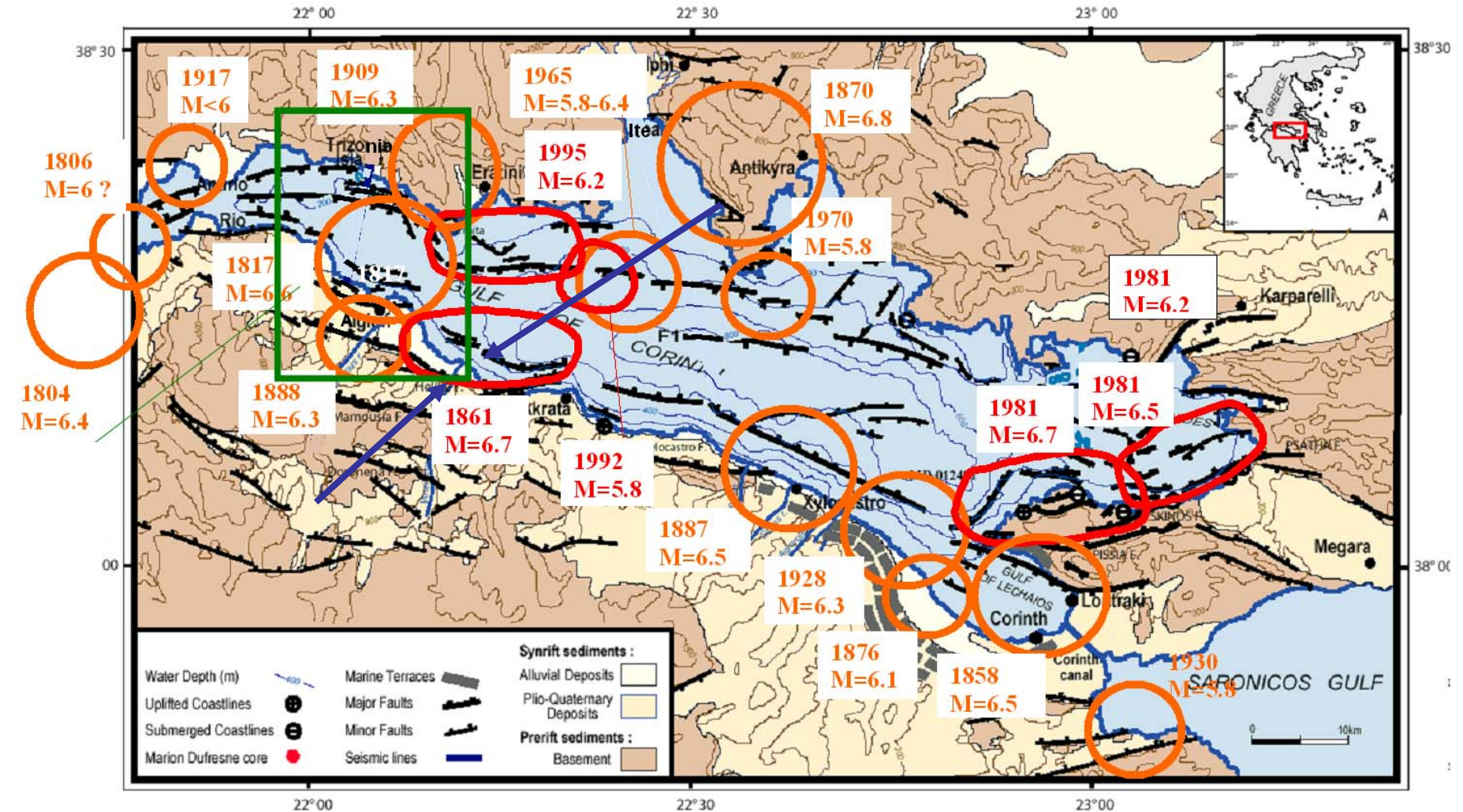


# Geodynamics in Greece





# Large earthquakes in the rift of Corinth 1800-2000



Ambraseys and Jackson, 1990; Papazachos and Papazachos, 1997

# Active faults near big cities



The Psathopirgos fault



# Active faults at home !



The Lakka fault, south side of the rift



**Put your hands on active faults**





# Put your hands on active faults





# More than 50 permanent instruments in the field





# Half of them are seismic stations



# The European Plate Observing System



Research Infrastructure and E-Science for Data and Observatories on Earthquakes,  
Volcanoes, Surface Dynamics and Tectonics

SEARCH

Why EPOS

Our Community

Preparatory Phase

Data & Services

Updates

European Research Infrastructure on Earthquakes, Volcanoes, Surface Dynamics and Tectonics

## EPOS: European Plate Observing System



What  
The Eur  
System  
solid Ea  
infrastruc  
the Euro  
on  
Infrastru

**WG1 - Seismological Observatories and Research Infrastructures**  
**WG2 - Volcano Observations;**  
**WG3 - Geological and Surface Dynamics data;**  
**WG4 - GNSS data and other Geodetic data;**  
**WG5a - OBS**  
**WG5b - Near Fault Observatory**  
**WG6 - Analytical and Experimental Laboratories;**  
**WG7 - e-infrastructures and virtual community (HPC and Grid);**  
**WG8 - Satellite information data;**  
**WG9 - Magnetic Observations;**  
**WG 10 - Infrastructures for Georesources**

[www.epos-eu.org](http://www.epos-eu.org)



# The CRL web portal



## Corinth Rift Laboratory

Partners ▾ Literature ▾ Projects ▾ Data-products ▾ About ▾ Education ▾ Links ▾ Events



## The CRL Near Fault Observatory

News: [The 2020–2021 Trizonia–Lambiri sequence](#)

The Corinth Rift Laboratory ([CRL-NFO](#); 21.35°E–22.5°E; 38°N–38.65°N) is centered between the cities of Patras (west) and Aigion (east). It is one of the most seismically active zones in Europe. Scientists and engineers are joining their efforts to investigate fault mechanics, its relationship with earthquakes, fluid flow and the related hazards in the Corinth rift



### NETWORKS

- [Seismological array](#)
- [The GNSS array](#)

# A seismic zone easily accessible in the field and ideal for education and training





# A seismic zone easily accessible in the field and ideal for education and training

